



AllWebID Identity Manager

Synchronizing users from Active directory

User Manual

Version 1.0

Overview

AllWebID supports Synchronize directory feature. Active directory attribute includes username, user email address and groups hierarchy.

Prerequisites

Prerequisites necessary for synchronization setup are as follows:

- Active Directory server hostname or IP address and base DN
- A system for running the AllWebID Synchronization Application
- Synchronization application system should be in the same network and same domain where active directory is installed.

Set Up Synchronization

Following are the steps to synchronize directory users:

Add Integration

- Log in to AllWebID administrative console. Select Add Integration from Integration menu to add new integration.
- Select integration type from dropdown list i.e. website only for website users, active directory only for active directory users and website and Active directory for both users.
- Only AllWebID Cell Phone Registration URL is enabled for active directory integration.
- URL is not required in Active directory integration.

Integration for:

Active Directory only

Integration Name:

AllWebID Active Directory integration

URL: ?

Cell Phone Registration URL: ?

Use AllWebID Web Page
 Use Custom Web Page

<https://admin.allwebid.com>
</ActivateCellPhonenumber.aspx>

Add

Manage Integration

- Select Manage Integration from Integration menu to manage integrations.
- Select integration to edit integration and change integration type.
- Edit, Delete, Regenerate, Enable and Disable integration can be done by selecting integration.

Enable
 Disable
 Regenerate
 Activate
 Delete

Search...

Select All	Integration	Integration Key	Integration Type	Status	Edit
<input type="checkbox"/>	test integration 01	c278f73571f545bdbc146488847c7713	Active Directory	<input checked="" type="checkbox"/>	
<input type="checkbox"/>	test integration 02	da0b242bb38b47f789d6995b833e2712	Website	<input checked="" type="checkbox"/>	
<input type="checkbox"/>	test integration 01III	141615fd3d954a0395ce6b0acf125b79	Website and Active Directory	<input type="checkbox"/>	

Add Active Directory

- Select Add Active Directory from Directory menu to add new directory
- Enter following details to add active directory:

Display name	Enter the descriptive name for active directory
Server IP address/Hostname	The IP address or hostname of your active directory domain
Base DN	The base DN should be a hierarchy in your active directory to synchronize users and group. Example: OU=IT ,DC=example, DC=com

Please provide directory details.

Directory name:

Server IP address/ hostname: ?

Base DN: ?

Add

Manage Active Directory

- Select Manage Active Directory from Directory menu to manage directory.
- Edit, Delete, Enable and Disable directory can be done by selecting active directory.

Enable Disable Delete

Search...

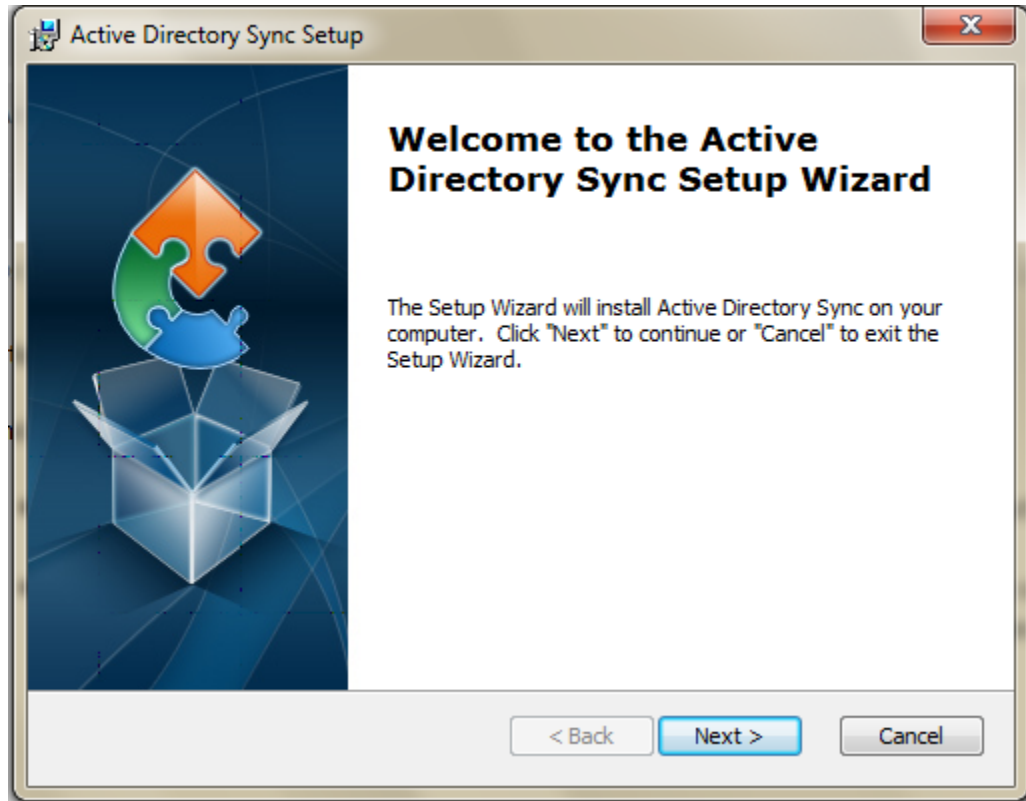
Select All	Directory Name	Server IP address/hostname	Base DN	Status	Edit
<input type="checkbox"/>	AllWeb Directory	LDAP://allweb.com	DC=allweb,DC=com		

You are viewing 1 to 1 of 1 records. Previous 1 Next

Note: Integration and active directory is linked in AllWebID directory synchronization application.

AllWebID Directory Synchronization Application

- Install AllWebID directory synchronization application on any system within a same network where active directory is installed
- System should be on same domain
- Download AllWebID directory synchronization application from Resources menu in administrative console. Run .exe file, AllWebID directory synchronization application setup wizard will open. Click on Next button to install AllWebID directory synchronization application.



- After successful installation, log in to AllWebID directory synchronization application with admin credentials.

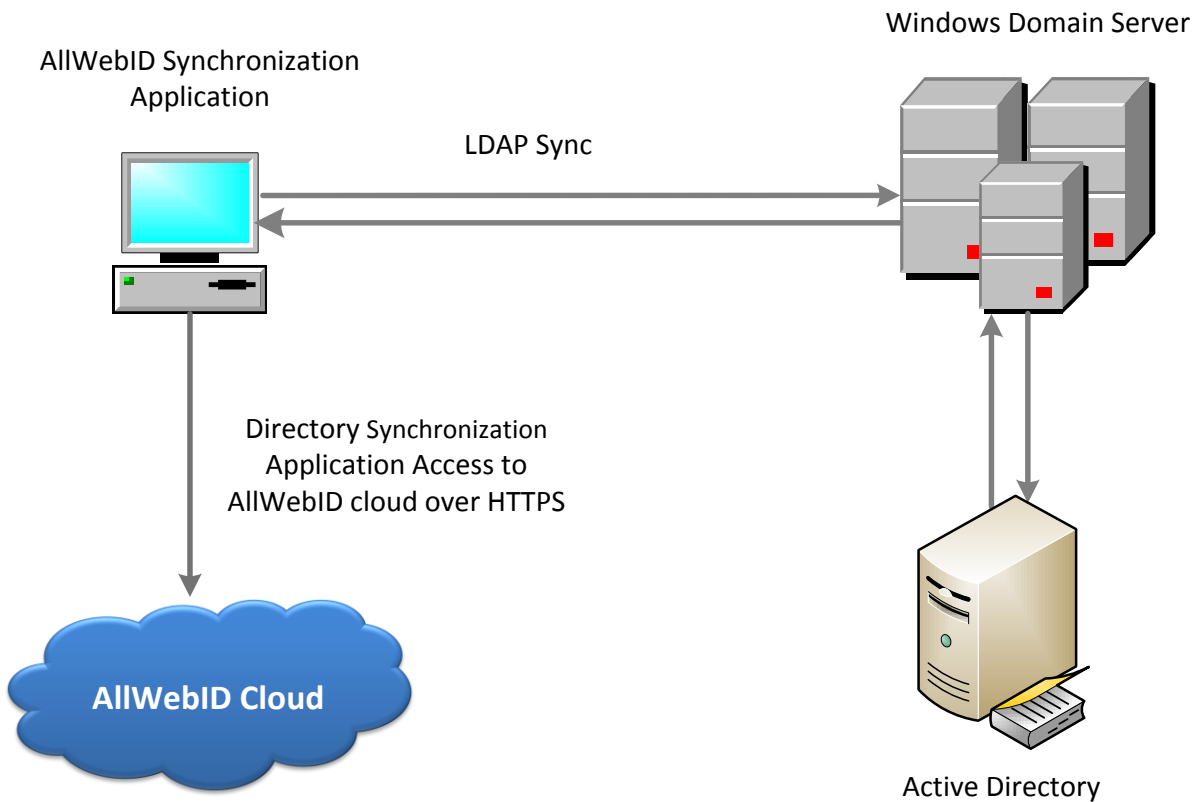
The screenshot shows a web browser window titled "Login". The page header includes the AllWebID logo on the left and a "Help" link on the right. The main content area is titled "Login" and contains two input fields. The "Username" field is filled with "admin@allweb.com". The "Password" field is masked with six dots. Below the input fields is a dark blue "Login" button.

- All integrations and active directories will be shown in dropdown lists against admin.
- Select integration and active directory from dropdown list and click on synchronize button.



- Whenever synchronize button is clicked, new active directory users list will be compared with SQLite database to check if any user is added or deleted from the active directory. If new user is added in active directory then new user will be sync to AllWebID cloud and updated user list will be stored in SQLite database. If any user is deleted from the active directory then that user will also be deleted from AllWebID cloud and updated user list will be stored in SQLite database.
- During synchronization process, email will be sent to all the users to register their cell phone number and device registration for out of band authentication.
- Users list will be displayed in Inactive Users under User menu initially. After the successful registration of cell phone number, user will appear in User Profile under User menu against the integration.

Network Diagram



- AllWebID Synchronization with Active Directory using LDAP
- AllWebID Synchronization application completes synchronization of directory over secure communication channel.